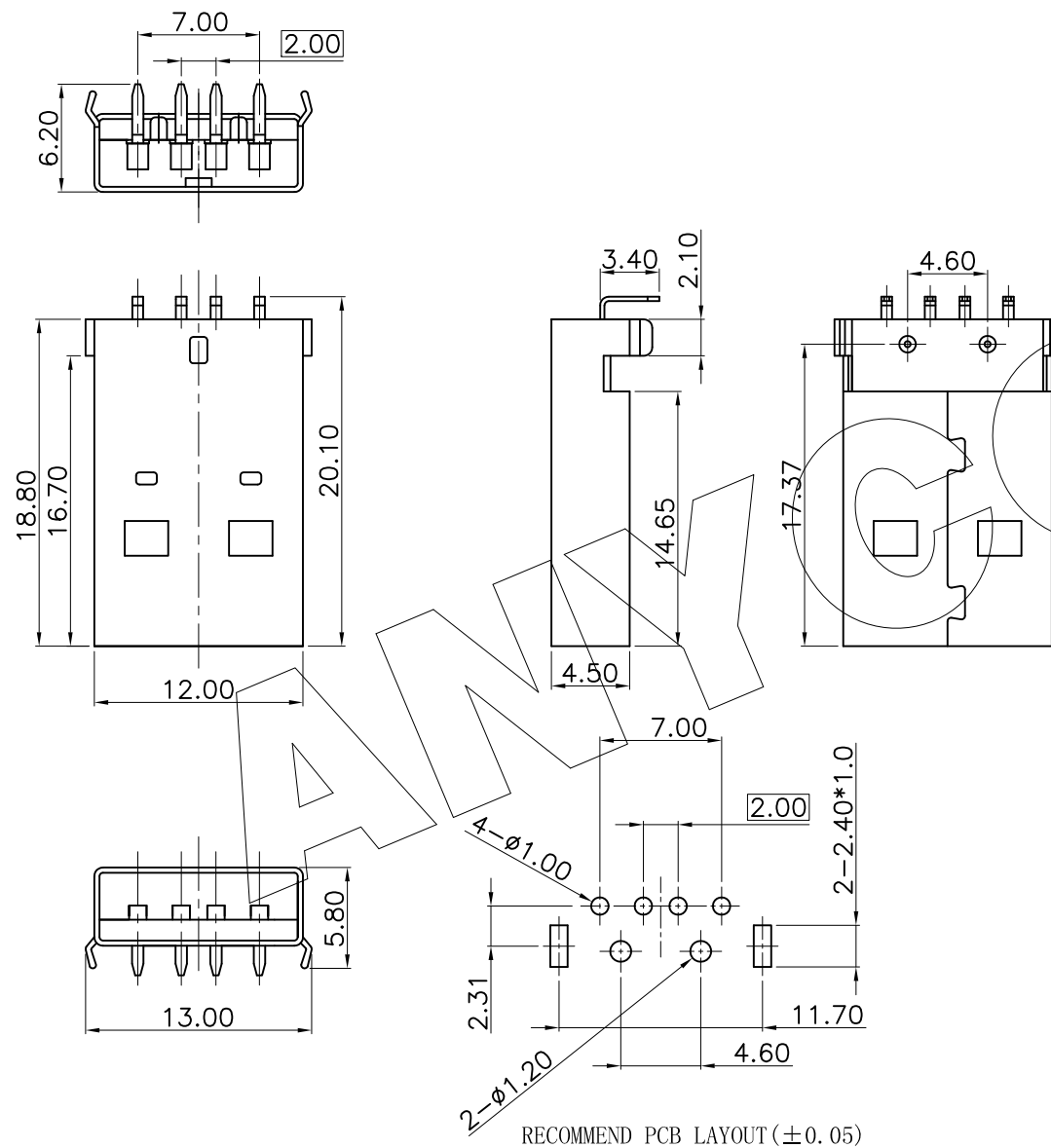


REVISION DATA

REV	DESCRIPTION	DATE
A0	NEW DRAWING	2016-5-26



NOTE:

1. Mechanical Characteristics
 - 1.1 Insertion Force: 3.57Kgf MAX.
 - 1.2 Withdraw Force: 0.7Kgf Min.
 - 1.3 Mating cycle: 5000 cycles
 - 1.4 Contact retention force: 0.15Kgf/Pin Min.
2. Electrical Characteristics
 - 2.1 Current Rating : 1.0 Amperes.
 - 2.2 Voltage Rating : 100V
 - 2.3 Contact Resistance: 60m Ω Max.
 - 2.4 Insulation Resistance: 1000M Ω Min.
 - 2.5 Dielectric Withstanding Voltage: AC 500V R.M.S.
3. Material :
 - 3.1 Shell : Copper Alloy, T=0.30mm
Plating: Ni 100 u" Min.
 - 3.2 Contact: Copper Alloy ,T=0.25mm
Plating: Au 5u" ON CONTACT AREA
 - 3.3 Housing : Hi-Temp UL 94V-0, Color Black.
4. Environmental
Operating Temperature: -25°C ~ +70°C

ANYCONN® 东莞市恩康电子有限公司
www.enkcom.com **DONGGUAN ANYCONN ELECTRONICS CO.,LTD**

TOLERANCE	PROJECTON		TITLE:	AM 90度插板		
ANGLE $\pm 5^\circ$	DATE :	2016-5-26	DRAWN :	ZHANG	PART NO:	
X.XXX ± 0.10	CHECKED :		APPROVED :		DRAWING NO:	
X.XX ± 0.20					REV:	A0
X.X ± 0.30					UNIT:	mm
X. ± 0.50					SCALE:	3:1
					SIZE:	A4